

N.W. 1/4  
SECTION 29, T.7N., R.1E., S.L.B. & M.

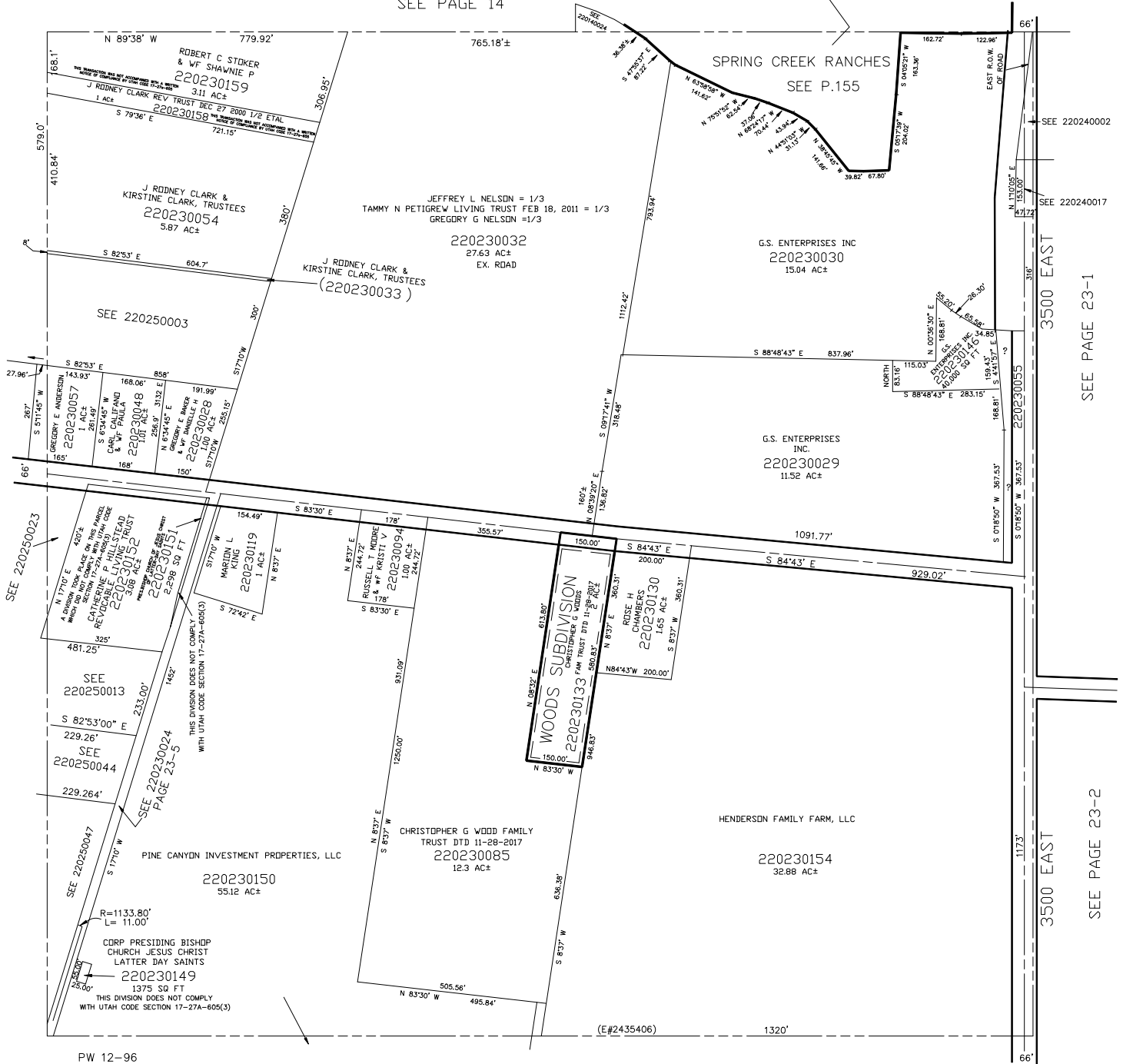
IN WEBER COUNTY

SCALE 1" = 200'

TAXING UNIT: 36

SEE PAGE 14

SEE PAGE 25



SEE 220240002

SEE 220240017

SEE PAGE 23-1

SEE PAGE 23-2

PW 12-96

SEE PAGE 23-5

\*ADDRESS AFFIDAVIT E#2803020